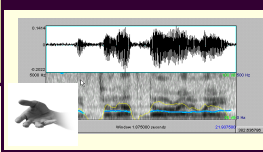



NSF Funding  
in Linguistics



Joan Maling  
Linguistics Program  
[jmaling@nsf.gov](mailto:jmaling@nsf.gov)

BLS February 11, 2018 1

---

---

---

---


---


---

---

---

2415 Eisenhower Ave., Alexandria, Virginia



BLS February 11, 2018  2

---

---

---

---

---


---

---

---

**Creating NSF: 1946 -1950**

- 4 years of contentious debate
- Major issues: Applied or basic research? Allocations by state, or merit? Who owns patents? Reporting to whom?
- “mathematical, physical, medical, biological, engineering, and *other sciences*”
- *May 10, 1950* passed by Congress and signed by President Truman

BLS February 11, 2018  3

---

---

---

---

---

---

---

---

### Social Science included?

- “If the impression becomes prevalent in the Congress that this legislation is to establish some sort of an organization in which there would be a lot of short-haired women and long-haired men messing into everybody’s personal affairs and lives, inquiring whether they love their wives or do not love them and so forth, you [= the scientists] are not going to get your legislation.”

*Rep. Clarence Brown (Ohio), 1946*

BLS February 11, 2018




---

---

---

---

---

---

---

---

### *But it didn't take long for social science to appear at NSF...*

- 1951: \$225,000 NSF’s original budget
- 1952: First 28 research awards were made
- 1957: Social Science Research Program established, funding research in 4 fields:
  - Economics
  - Anthropology
  - Sociology
  - History and philosophy of science

BLS February 11, 2018




---

---

---

---

---

---

---

---

### *Today, NSF (nsf.gov)....*

- Engages in competitive process of merit review of ~ 50,000 proposals/year (funds ~11,500);
- Welcomes proposals from all qualified scientists and engineers;
- Encourages women, members of minority groups, and persons with disabilities to compete fully in all NSF programs;
- Supports graduate students through fellowships, dissertation improvement grants, and funding (as research assistants) through faculty research grants.




---

---

---

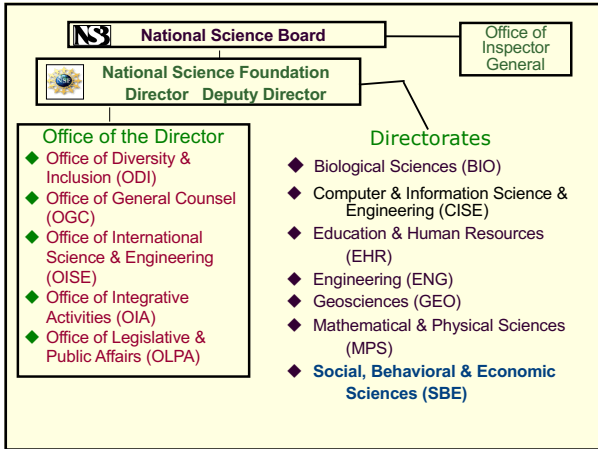
---

---

---

---

---




---

---

---

---

---

---

---

---

## Social, Behavioral & Economic Sciences (SBE)

**Directorate** headed by Assistant Director:  
Fay Lomax Cook (since 9/2014)

**3 Divisions:**

- BCS (Behavioral & Cognitive Sciences)
- SES (Social & Economic Sciences)
- NCSES (National Center for Science & Engineering Statistics)

BLS February 11, 2018

---

---

---

---

---

---

---

---

## Programs

- Divisions are divided into “programs” each with its own budget & funding areas
- Also: Directorate-level Programs
- Also: Inter/Cross-Directorate Programs
- Also: Short-term opportunities – Dear Colleague Letters, Special Competitions, Investment Areas.

---

---

---

---

---

---

---

---

### Kinds of proposals (mechanisms)

- Disciplinary Programs differ, but most support:
  - Regular/senior research grants
  - Doctoral Dissertation Research Improvement grants\*
  - CAREER awards
  - Workshops/Conferences
  - High risk awards (EAGER, RAPID)
  - Training programs (including Scholars)
  - Research Coordination Networks (RCNs)




---

---

---

---

---

---

---

---

### NSF budget FY17 \$7.5 billion

The budget for Social Sciences (SBE Directorate) (\$272M in FY17) is *less than 4%* of the NSF budget  
 FY2017 **BCS Program** Base Allocations

- Linguistics \$6.2M
- Documenting Endangered Languages (DEL) \$2.3M
- Developmental Sciences (formerly DLS) \$7.0M
- Perception, Action & Cognition (PAC) \$7.3M
- Cognitive Neuroscience \$8.0M
- Science of Learning (new in October 2016) \$2.1M

BLS February 11, 2018




---

---

---

---

---

---

---

---

### Changes to Core BCS Programs (effective October 1, 2016)

**Science of Learning (SL)**  
 Supports research addressing learning in a wide range of domains at one or more levels of analysis:

- molecular/cellular mechanisms;
- brain systems;
- cognitive, affective, and behavioral processes;
- social/cultural influences.

Contacts: Soo-Siang Lim & Kurt Thoroughman

**Developmental Sciences (DS)**  
 Supports research that addresses developmental processes within the domains of cognitive, social, emotional, and motor development

- across the lifespan from birth to old age,
- using any appropriate populations including infants, children, adolescents, adults, and non-human animals.

Contact: Chalandra Bryant



12

---

---

---

---

---

---

---

---

### The National Science Foundation

<http://nsf.gov>

- Engages in competitive process of merit review of proposals
- Welcomes proposals from all qualified scientists and engineers
- Strongly encourages women, members of minority groups, and persons with disabilities to compete fully in all NSF programs
- Supports graduate students through fellowships, dissertation improvement grants, and funding (as research assistants) through faculty research grants

BLS February 11, 2018




---

---

---

---

---

---

---

---

### Graduate Research Fellowships

- Fellowships are intended for individuals in the early stages of their graduate study.
  - Applicants must have completed no more than twelve months of full-time graduate study (or the equivalent in part-time study) at the time of application.
  - Individuals may apply during the senior year of college, prior to or during the first year of graduate school, and at the beginning of the second year of graduate school, but only *once* as a grad student.
- U.S. citizens or permanent resident aliens
- **Contact:** Susan Brennan [sbrennan@nsf.gov](mailto:sbrennan@nsf.gov)

BLS February 11, 2018




---

---

---

---

---

---

---

---

### Graduate Research Fellowships

- [www.nsf.gov/grfp](http://www.nsf.gov/grfp) (solicitation 16-588)
    - \$34,000 stipend per year for 3 years plus an annual cost-of-education allowance paid to the Fellow's institution in lieu of tuition & fees
    - 2,000 awards annually (success rate ~ 12%)
    - Next proposal deadline:
  - **October 25, 2018** (Social Sciences/Psychology)
- Note: review panels will have very few linguists; you should write for a general social science audience!

BLS February 11, 2018




---

---

---

---

---

---

---

---

### Graduate Research Summer Institutes (EAPSI) Solicitation 13-593

**ARCHIVED!** ☹

The East Asia & Pacific Summer Institutes (EAPSI) program provided U.S. graduate students in science and engineering with first-hand research experience in **Australia, New Zealand, China, Japan, Korea, Singapore or Taiwan**; an introduction to the science, science policy, and scientific infrastructure of the respective locations, and language training (if needed) during an eight week summer program. International **airfare, living expenses in the host location, and a summer stipend of \$5,000** were provided.

- U.S. citizenship or permanent resident status required for fellowships

BLS February 11, 2018




---

---

---

---

---

---

---

---

---

---

### JSPS International Fellowships for Research in Japan

JSPS (Japan Society for the Promotion of Science) provides opportunities for students, postdocs and faculty to conduct collaborative research in Japan.

Two programs: Postdoctoral vs. Invitational

- **Postdoctoral Fellowships** for young pre-/post-doctoral researchers from France, Germany, Sweden, UK, Canada, US

**Summer Program:** a period of two months during the summer to pursue research under the guidance of host researchers in universities and research institutions in Japan.

**Short-Term Program:** pre-/post-docs, 1-12 months;

**Standard Program** for postdocs: 12-24 months

BLS February 11, 2018



17

---

---

---

---

---

---

---

---

---

---

### JSPS International Fellowships for Research in Japan

JSPS = Japan Society for the Promotion of Science

- **Invitational Fellowships** (for mid-career & senior scholars)

Long-term and Short-term programs, including Pathway to University Positions in Japan

[http://www.jsps.go.jp/english/e-inv\\_researchers/index.html](http://www.jsps.go.jp/english/e-inv_researchers/index.html)

For further information contact: Anne Emig [aemig@nsf.gov](mailto:aemig@nsf.gov)

BLS February 11, 2018



18

---

---

---

---

---

---

---

---

---

---

### International Research Experience for Students (IRES)

- The new IRES solicitation (18-505) describes three tracks, Track I: IRES Sites, Track II: Advanced Studies Institutes, and Track III: New Concepts in International Graduate Experience.
- Students do not apply directly to NSF to participate in IRES activities; rather they apply to NSF-funded investigators who receive IRES awards.
- Students supported by IRES funds must be citizens, nationals, or permanent residents of the United States
- Next deadlines: September, 2018
- Contact: Anne Emig [aemig@nsf.gov](mailto:aemig@nsf.gov)

BLS February 11, 2018



19

---

---

---

---

---

---

---

---

### Doctoral Dissertation Research Improvement Grants (in SBE)

- offered in some core programs in SBE (e.g. Ling, DEL & CulAnth, but *not* DLS, PAC or CogNeuro)
- maximum award: \$12,000 in direct costs in LING; \$15,000 in direct costs (line H) in DEL  
indirect costs are allowed (change)
- Award duration: 12-24 months
- NSF publication 14-551 (LING); 16-617 (DEL)

BLS February 11, 2018




---

---

---

---

---

---

---

---

### Doctoral Dissertation Research Improvement Grants (SBE)

- proposals are submitted through regular university channels (your Sponsored Research Office)
- thesis advisor is the PI; grad student is the co-PI
- student must be enrolled at U.S. institution, but need not be a U.S. citizen or permanent resident
- funds may be used for research expenses like payments to subjects; specialized research equipment; travel to specialized collections, facilities or field research locations; and partial living expenses for conducting research away from student's university

BLS February 11, 2018



21

---

---

---

---

---

---

---

---

### Postdocs: SBE Postdoctoral Research Fellowships (SPRF)

- Provides grants for American scientists within 36 months of receiving Ph.D.
- Track 1: Fundamental research in SBE Sciences;
- Track 2: Broadening Participation in SBE Sciences
  - U.S. citizen or permanent resident
  - **must have Host/Sponsoring Scientist**
  - 15-20 fellowship awards annually, support for up to 2 years
  - NSF Solicitation 17-588
- **Next due date: Oct. 9, 2018**
  - (second Monday in October, annually thereafter)
- **Contact:** Josie Welkom [jwelkom@nsf.gov](mailto:jwelkom@nsf.gov)



BUCLD November 4, 2016

---

---

---

---

---

---

---

---

### Proposal Basics

- You **write** it.
- Your institution **submits** it.
- NSF **reviews** it (minimum of 3 reviews required).
  - Compliance check
  - In-house reviews (sometimes)
  - Ad hoc reviews (usually)
  - Advisory panels (usually)
  - Program officer recommendation
  - Division Director review and concurrence

BLS February 11, 2018



---

---

---

---

---

---

---

---

### Postdoctoral Mentoring Plan

- All proposals that request funds to support a postdoctoral researcher *must* include a **Postdoctoral Mentoring Plan** as a supplemental document (maximum of 1 page)

BLS February 11, 2018



24

---

---

---

---

---

---

---

---



### Relatively recent changes

- More emphasis on Broader Impacts.
- Data Management Plan (up to 2 pages).  
[cf. AAA website, Ethics Statement 6.]
- Postdoc Mentoring Plan (1 page).
- Collaborators: separate “single copy” document
- Transparency & Accountability:
  - Abstracts & titles must communicate the importance of the research to the public.

BLS February 11, 2018




---

---

---

---

---

---

---

---

### Data Management Plan

NSF requires all proposals to include a *data management plan* in the form of a supplemental document (maximum of 2pp.)

- Existing policy requires awardees to **share their data** within a reasonable length of time, so long as the cost is modest.
- A valid Data Management Plan *may include* the statement that no detailed plan is needed, as long as the statement is accompanied by a clear justification (e.g., a conference that will not generate new data).

BLS February 11, 2018




---

---

---

---

---

---

---

---

### Data Management Plans (Cont'd)

- What kinds of data, software and other materials will your research produce?
- How will you manage it? (e.g. metadata standards, standards for format, content, migration, etc.)
- How will you give others access to your data, preserving confidentiality, security, intellectual property & other rights/requirements?
- How will you archive data and preserve access?

Not “one size fits all”! DEL has specific requirements.

BLS February 11, 2018



27

---

---

---

---

---

---

---

---

## Human Subjects (IRB)

- You do not need IRB approval at the time of submission (put "Pending" on cover page)
- You *will* need IRB approval before an award can be made. Allow enough time to get it!
- Your IRB may require country approval from research site; your IRB may meet infrequently over the summer.
- NSF defers to the campus IRB.

BLS February 11, 2018



---

---

---

---

---

---

---

---

## Official NSF review criteria

### Intellectual Merit:

- Importance of topic
- Qualifications
- Creativity & originality
- Transformative?
- Conception & organization
- Access to resources

### Broader Impacts:

- Training
- Mentoring
- Diversity
- Infrastructure
- Dissemination/  
Public awareness
- Societal Benefits

BLS February 11, 2018



---

---

---

---

---

---

---

---

## Co-review?

- Submit one proposal to multiple programs
- Choose one or more programs on cover page
- Will go to more than one review panel
- Both fund, neither fund, one funds
- Some programs fund higher % of DDIGs (= better odds?)
- Reviews from multiple perspectives (= better science)

BLS February 11, 2018



---

---

---

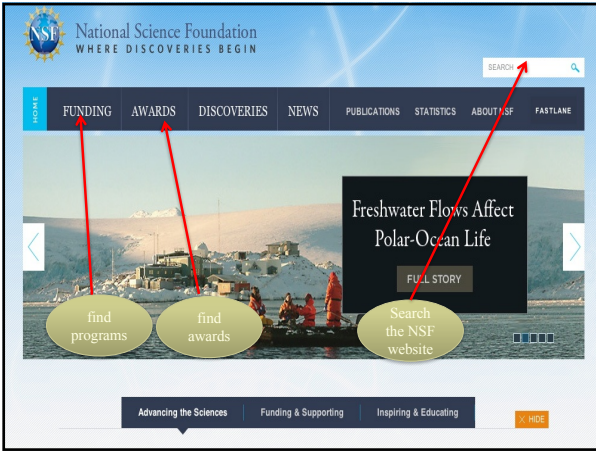
---

---

---

---

---




---

---

---

---

---

---

---

---

**Need help?**  
**Contact your Program Officer(s):**

**Linguistics Program**  
 Joan Maling [jmaling@nsf.gov](mailto:jmaling@nsf.gov)  
 Bill Badecker [wbadecke@nsf.gov](mailto:wbadecke@nsf.gov)

**Documenting Endangered Languages**  
 Colleen Fitzgerald [cfitzger@nsf.gov](mailto:cfitzger@nsf.gov)

**Developmental Sciences (DS)**  
 Chalandra Bryant [cbryant@nsf.gov](mailto:cbryant@nsf.gov)

**Perception, Action & Cognition (PAC)**  
 Betty Tuller [btuller@nsf.gov](mailto:btuller@nsf.gov)  
 Larry Gottlob [lgottlob@nsf.gov](mailto:lgottlob@nsf.gov)

**Cognitive Neuroscience**  
 Uri Hasson [uhasson@nsf.gov](mailto:uhasson@nsf.gov)

BLS February 11, 2018




---

---

---

---

---

---

---

---