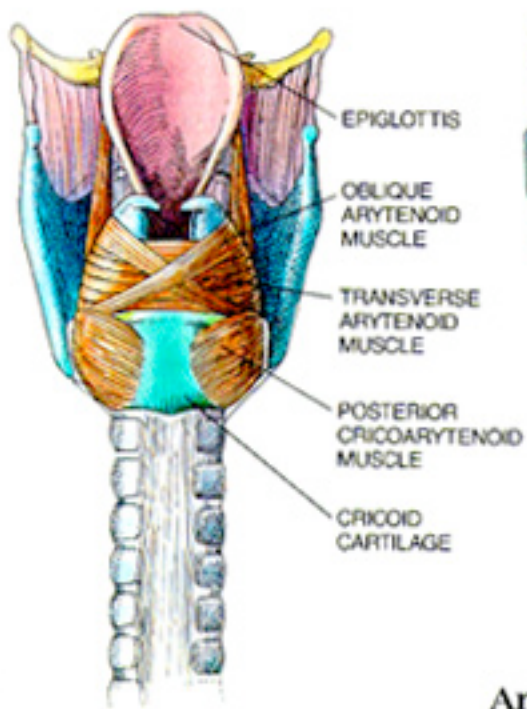
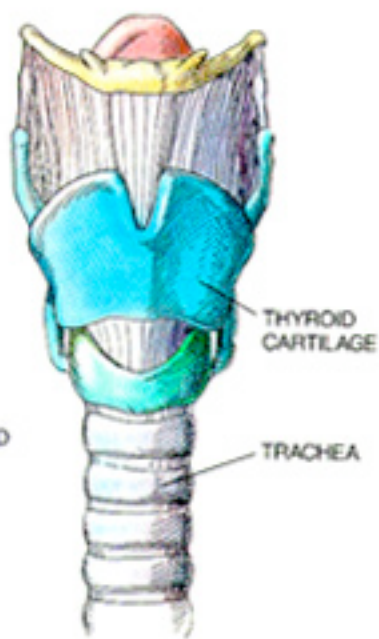


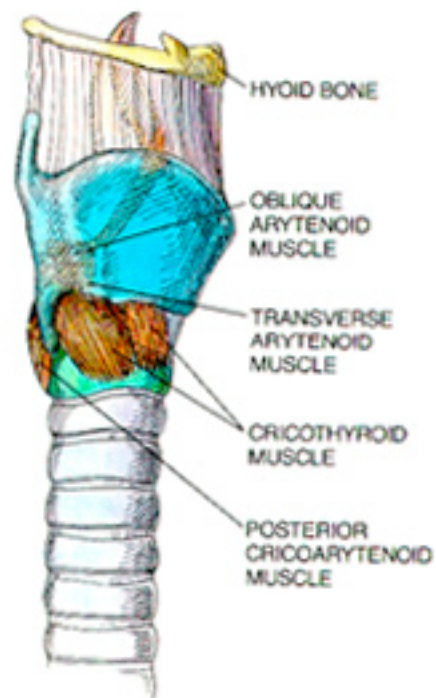
REAR VIEW OF LARYNX



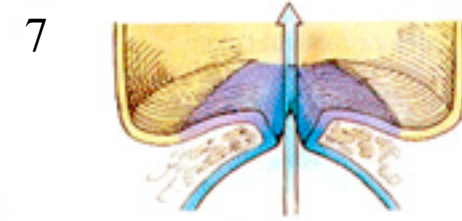
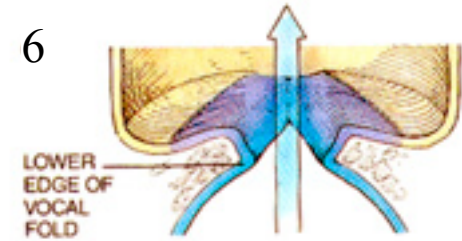
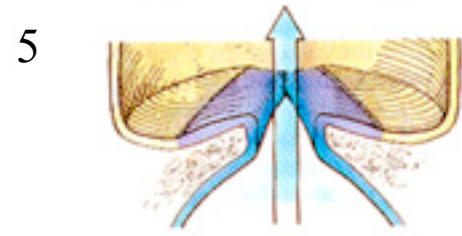
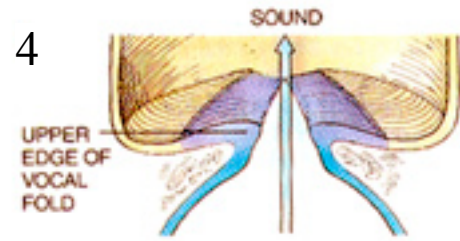
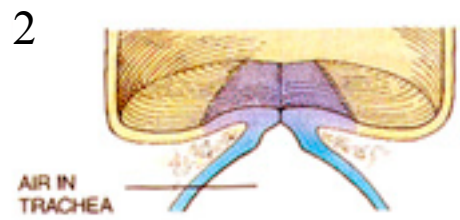
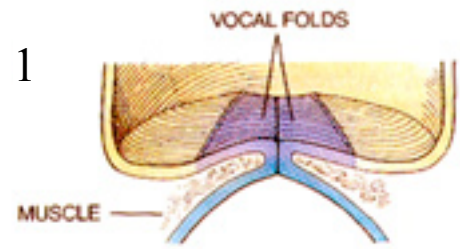
FRONT VIEW OF LARYNX

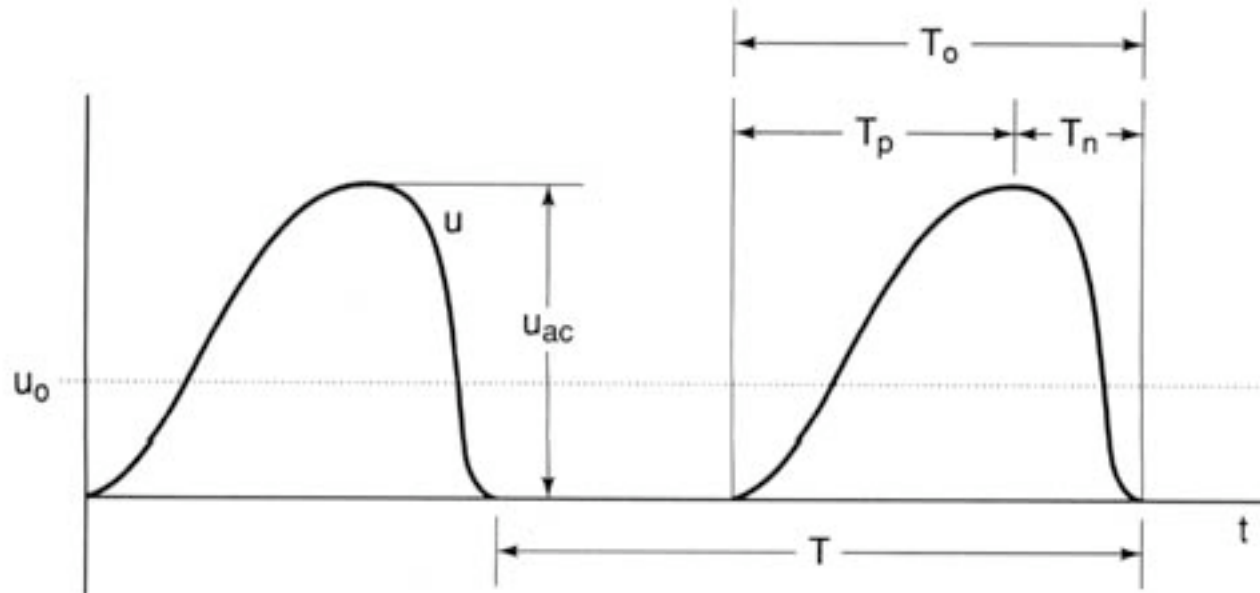


RIGHT VIEW OF LARYNX



Anatomy of the Voice





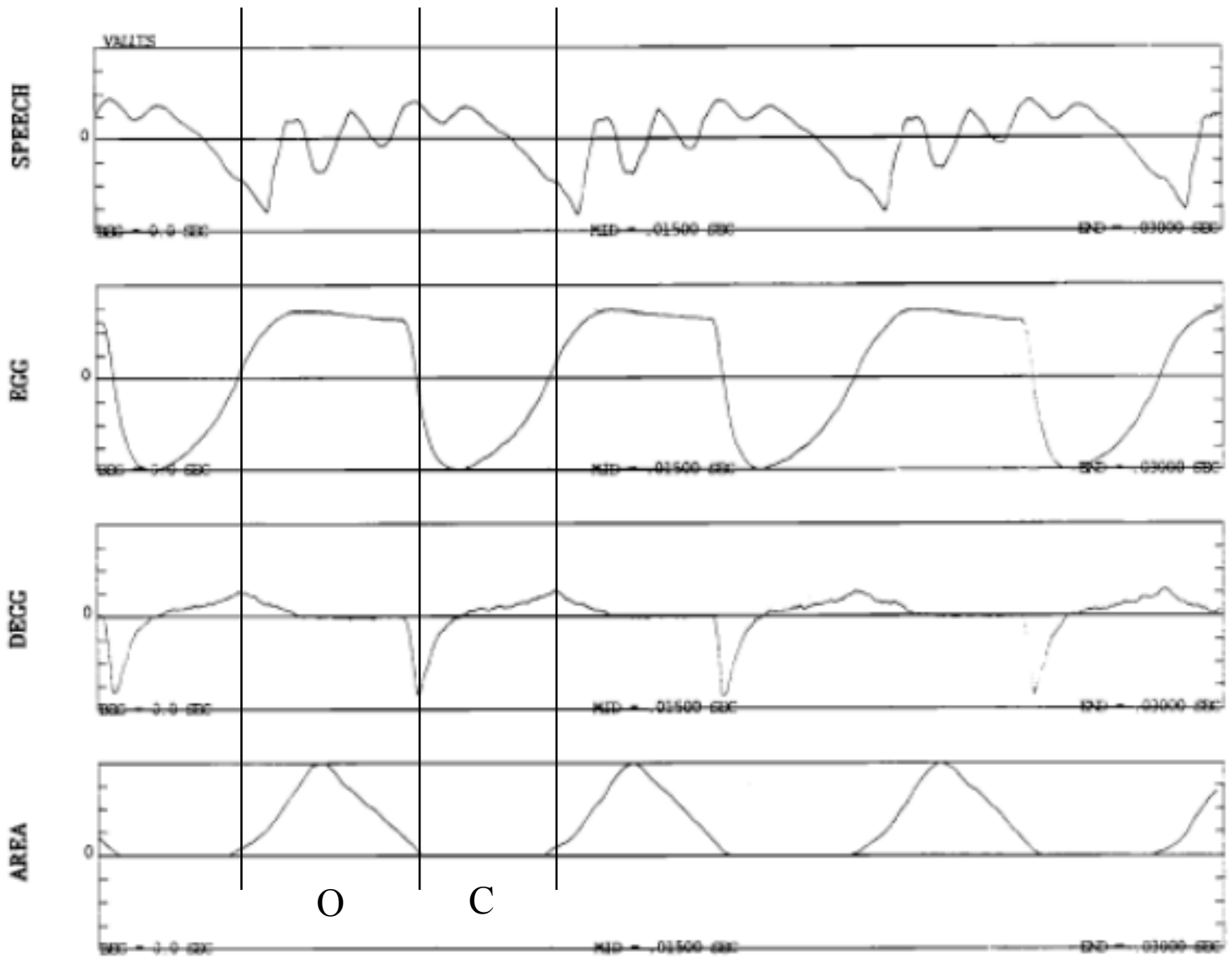
$T_p$  the part of the glottal cycle in which airflow rate is increasing (thus, the slope of the curve is going upward during this time). Think of 'p' for positive.

$T_n$  the part of the glottal cycle in which airflow rate is decreasing (downward slope in the curve). Here, 'n' represents negative.

$T_o$  the length of time during each cycle in which air is flowing (i.e., the folds are open)

$u_0$  the average rate of airflow

$u_{ac}$  maximum rate of flow



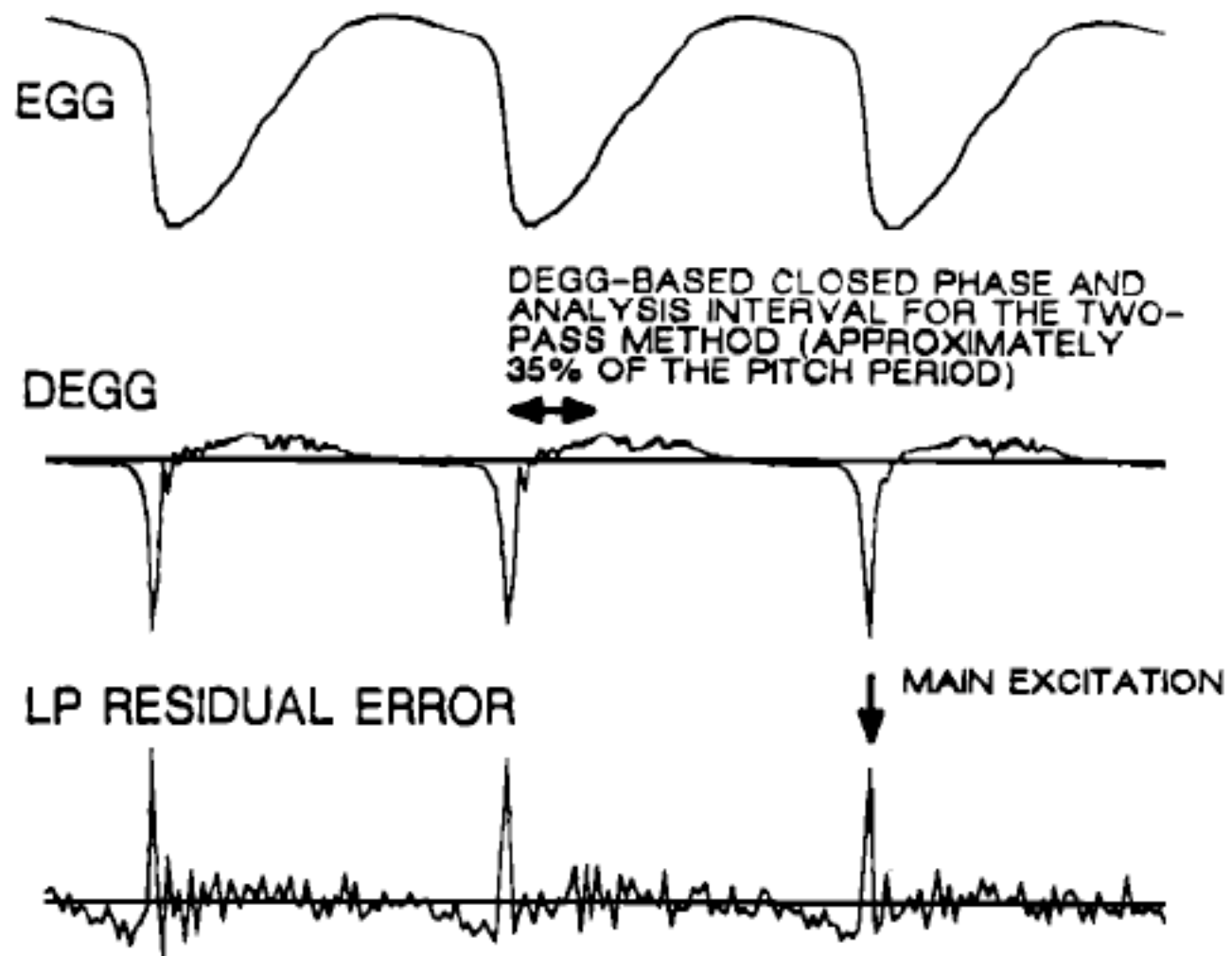
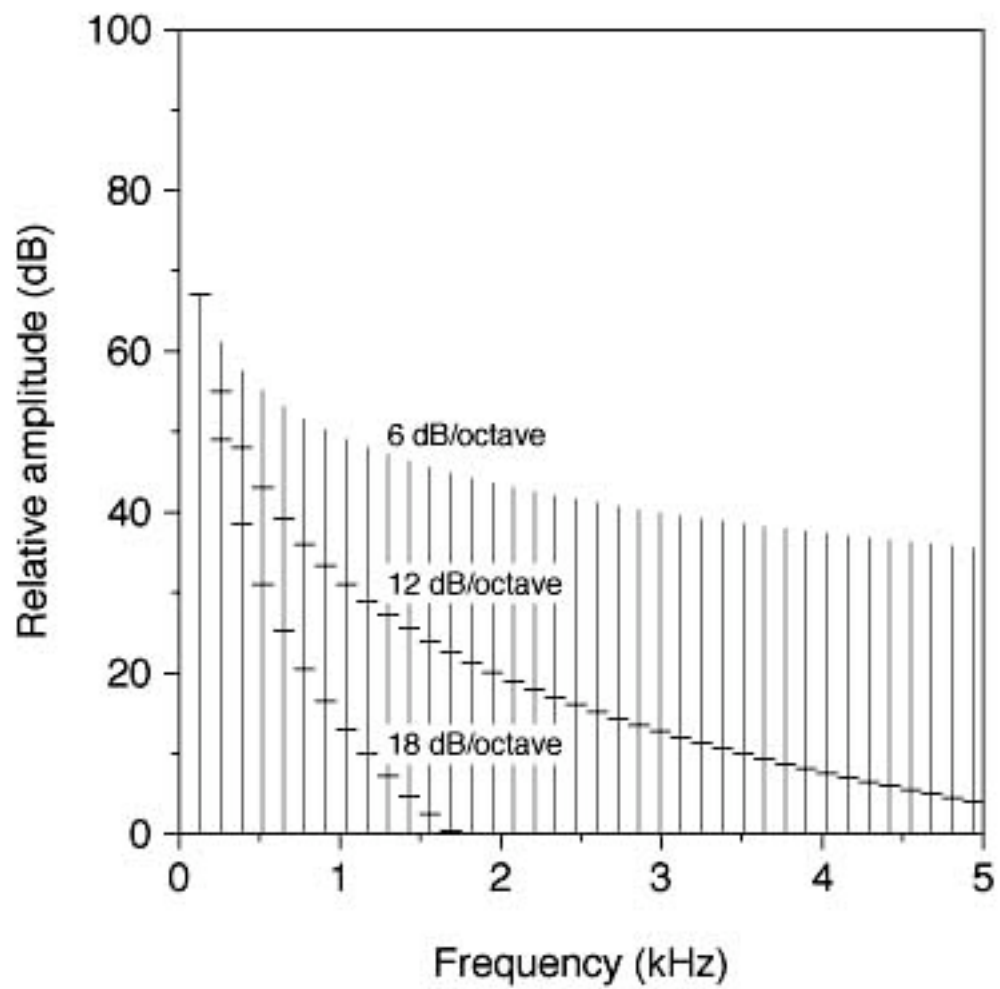
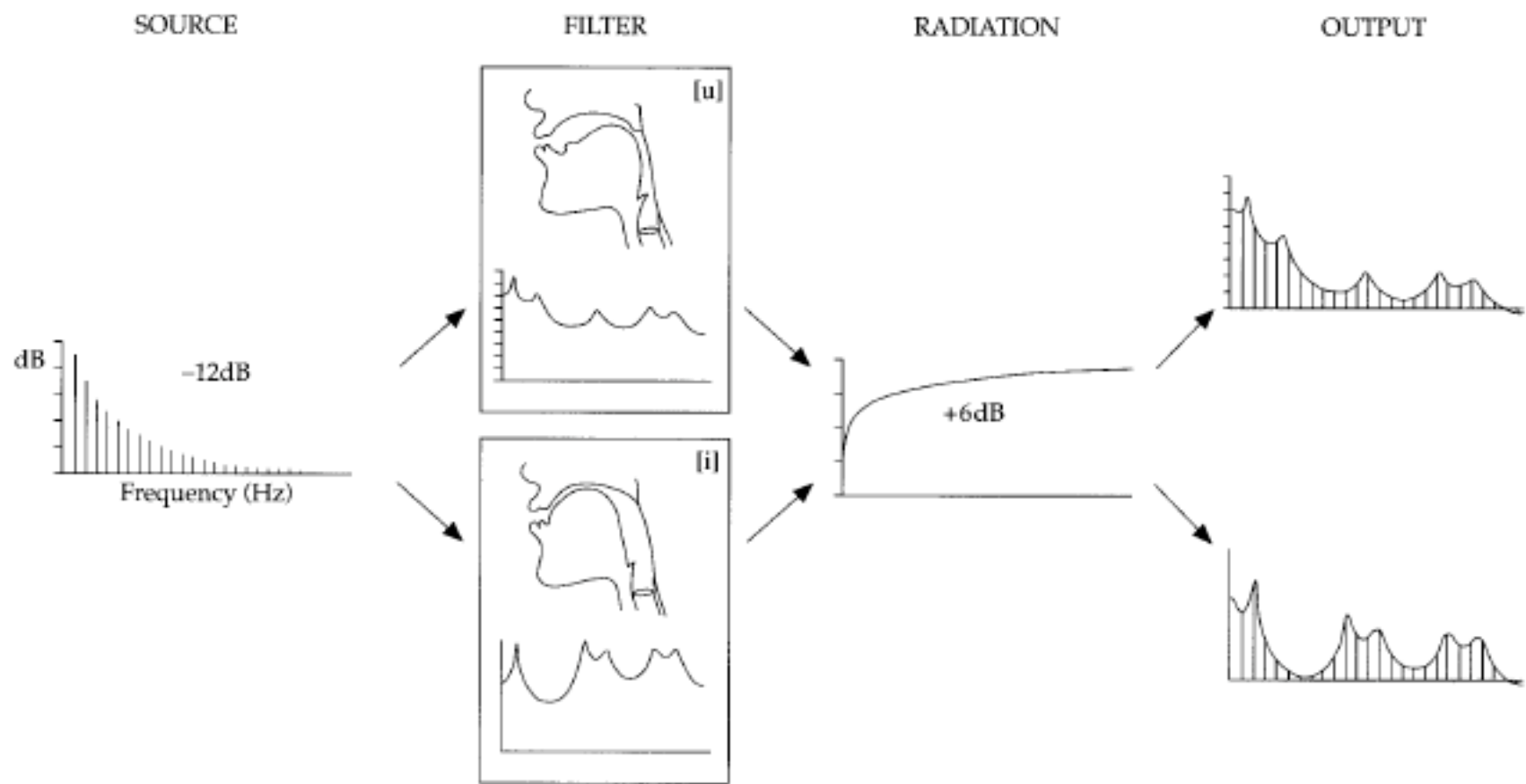


FIG. 2. Synchronized EGG, DEGG, and LP residual error.





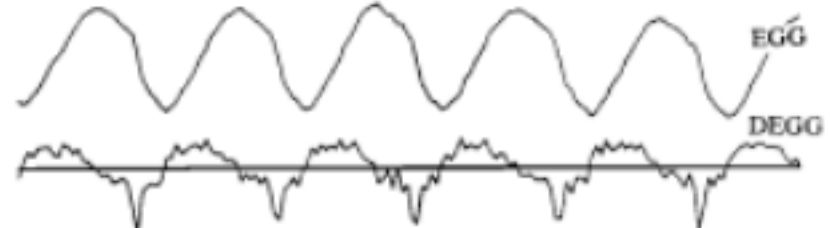
N12, modal



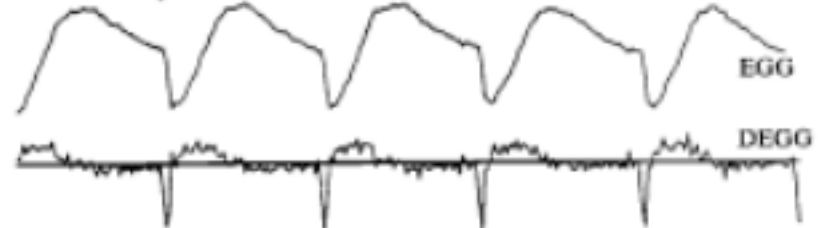
N24, vocal fry

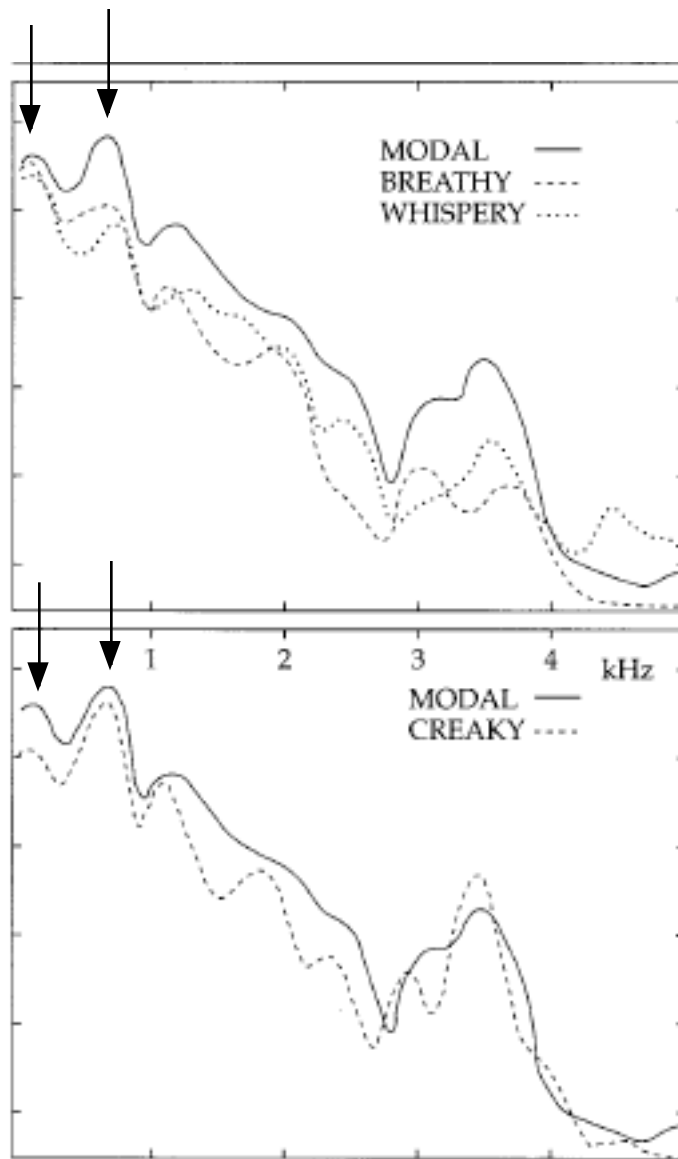


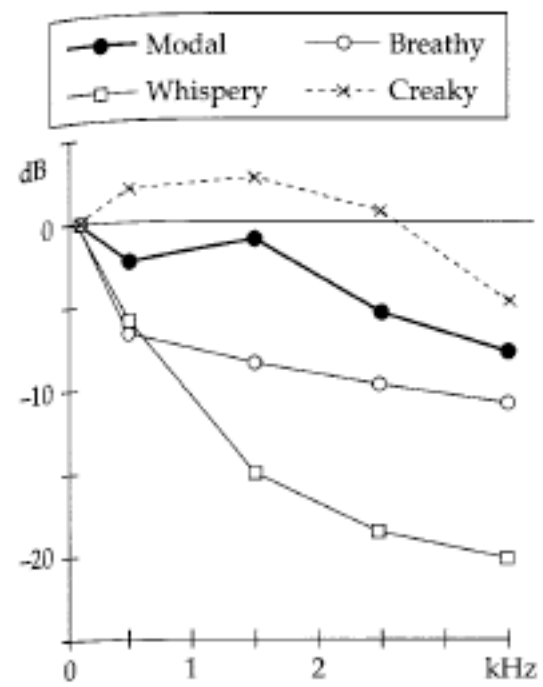
N18, falsetto



P13, breathy







	Modal	Breathy	Creaky
EGG	OQ=50%	OQ > Modal	OQ < Modal
Airflow	x mmH2O	> x	< x
Spectrum	12dB/octave	>12dB	<12dB